



并离网智慧能源方案解决商 on/off-grid smart energy solution provider



全套解决方案
complete solution

MONO SOLAR PANEL

单晶硅-组件



◆ 组件特性 Component characteristics



载荷能力
整体组件通过2400pa的风载荷及5400pa的雪载荷认证。
The whole assembly has passed the certification of 2400pa wind load and 5400pa snow load.



多主栅技术
9主栅技术减小了主栅和细栅的距离,有效降低电流损失,提高组件输出功率。
9 main gate technology reduces the distance between main gate and thin gate, effectively reducing current loss, improve the output power of components.



良好的质保
12年产品质保; 25年功率质保。
12-year product warranty; Five-year power warranty.



TR(叠焊技术)
晶昶自主研发的叠焊技术,有效消除电池间隙,提高组件功率(单面组件高达21.48%)。
The overlapping welding technology independently developed by JC can effectively eliminate the battery gap and improve Component power (up to 21.48% for single-sided components).



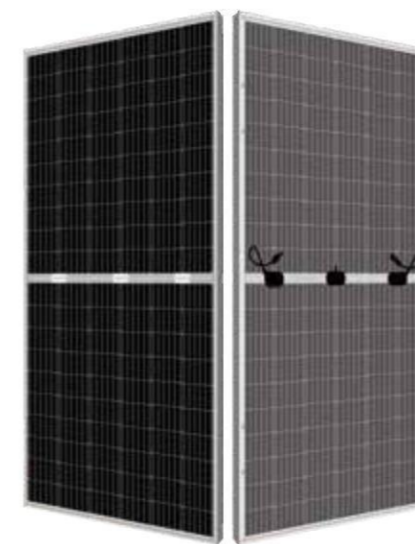
更好的衰减带来更多发电量
首年衰减: 2%; 线性衰减: 0.55%。
First year attenuation: 2%; Linear attenuation: 0.55%.



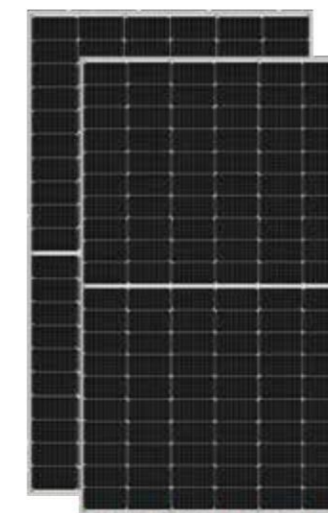
避免断栅、碎片以及隐裂问题
9主栅组件采用特有的圆丝焊带,有效避免组件的断栅、碎片以及隐裂问题。
9 The main grid assembly adopts special round wire welding tape, which can effectively avoid the broken grid of the assembly, and the problem of cracked fragments.



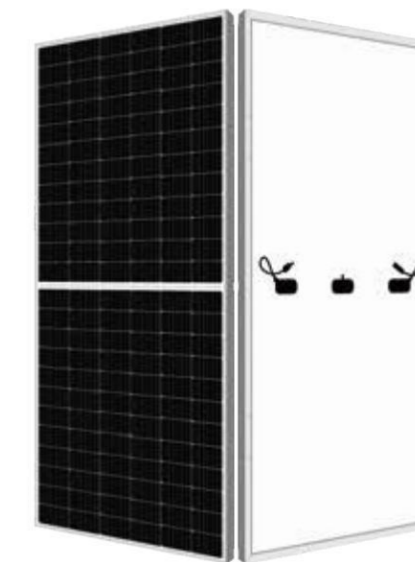
EnStar



590W-610W
Weight / No of cells : 31.4KG ± 3% / 144 (6*24)
Dimensions : 2465*1134*35mm



550W
Weight / No of cells : 27KG
Dimensions : 2278*1134*35mm



450W-460W
Weight / No of cells : 25KG
Dimensions : 2094*1038*35mm

FLEXIBLE SOLAR PANEL OEM

轻质组件 Solar cable/controller one stop service



◆ 组件特性 Component characteristics



载荷能力

整体组件通过2400pa的风载荷及5400pa的雪载荷认证。
The whole assembly has passed the certification of 2400pa wind load and 5400pa snow load.



良好的质保

12年产品质保；25年功率质保。
12-year product warranty; Five-year power warranty.



更好的衰减带来更多发电量

首年衰减：2%；线性衰减：0.55%。
First year attenuation: 2%; Linear attenuation: 0.55%.



多主栅技术

9主栅技术减小了主栅和细栅的距离，有效降低电流损失，提高组件输出功率。
9 main gate technology reduces the distance between main gate and thin gate, effectively reducing current loss, improve the output power of components.



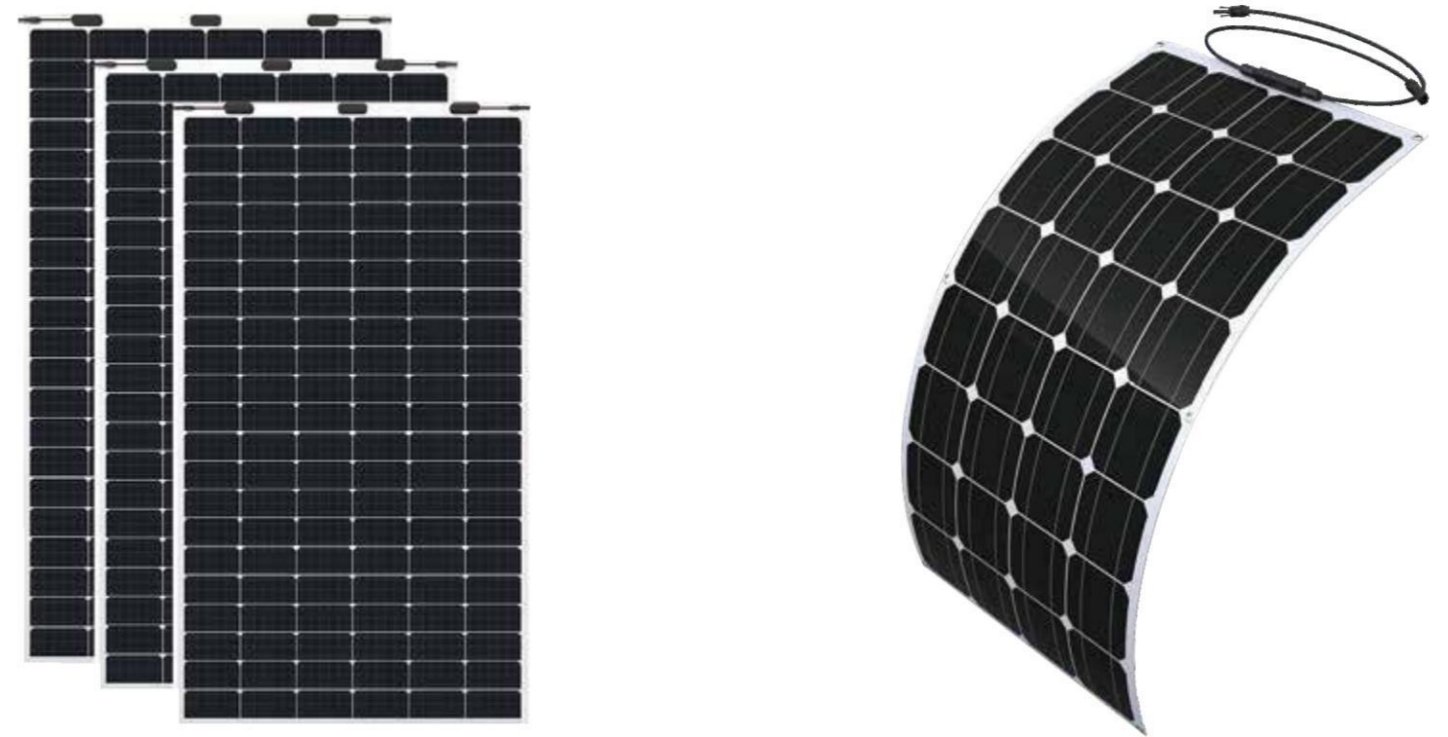
TR(叠焊技术)

晶昶能自主研发的叠焊技术,有效消除电池间隙,提高组件功率(单面组件高达21.48%)。
The overlapping welding technology independently developed by JC can effectively eliminate the battery gap and improve Component power (up to 21.48% for single-sided components).



避免断栅、碎片以及隐裂问题

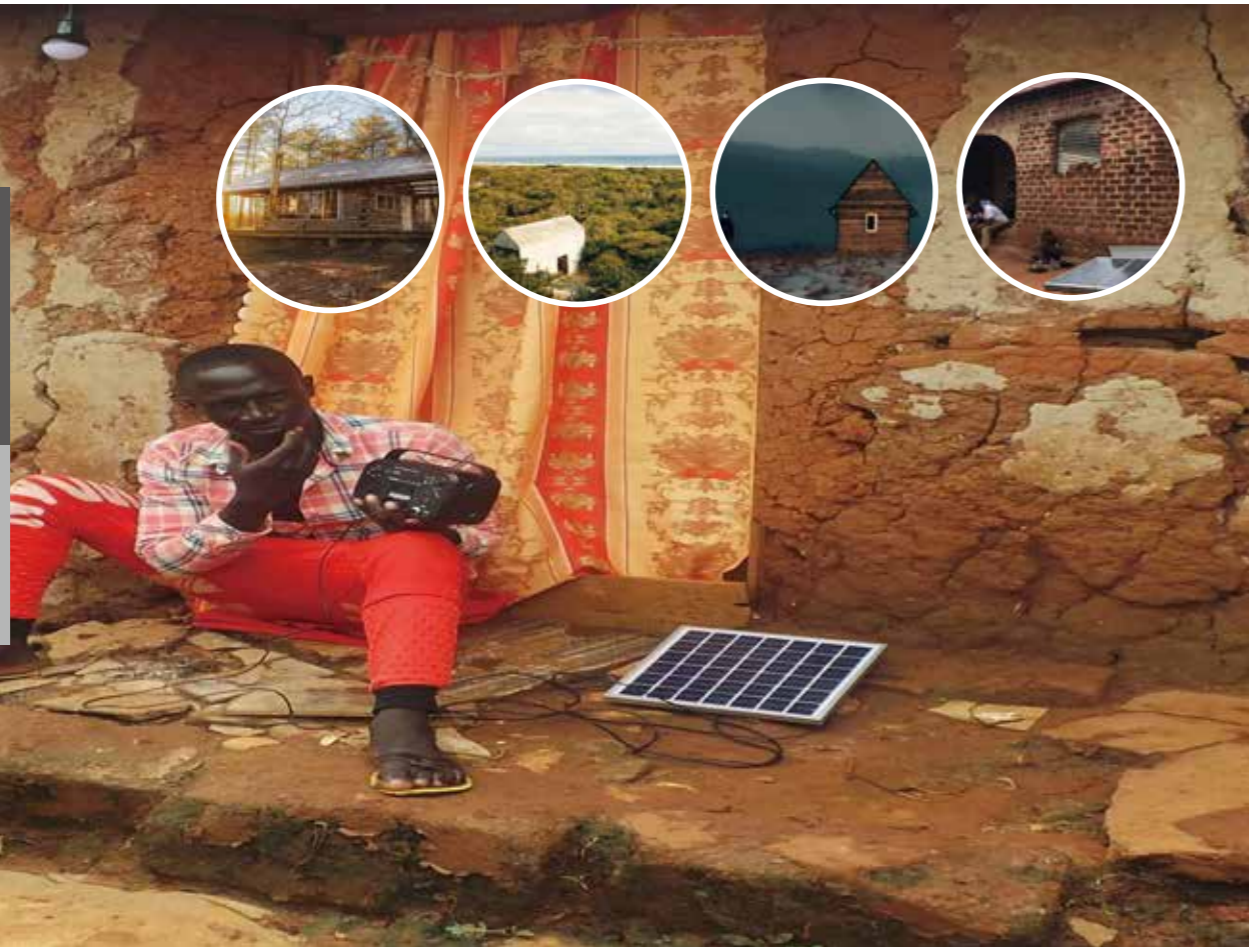
9主栅组件采用特有的圆丝焊带，有效避免组件的断栅、碎片以及隐裂问题。
9 The main grid assembly adopts special round wire welding tape, which can effectively avoid the broken grid of the assembly, And the problem of cracked fragments.



Output Power 输出功率	Working Voltage 工作电压	Size 产品尺寸	Package 包装尺寸	GROSSWEIGHT 毛重
100W	18V	1080*540*3MM	1100*565*28MM	3KG
140W	18V	1090*700*3MM	1100*720*35MM	3.8KG
200W	18V	1585*700*3MM	1605*720*35MM	6KG
220W ETFE	18V	1585*700*3MM	1605*720*35MM	6KG

DC 太阳能 家用小系统

DC Solar Home Lighting System



◆ Widely used in: night markets, mountain areas, night fishing, camping, maintenance, household, various household appliances and other places.
广泛应用于：夜市、山区、夜钓、露营、维修、家用、及各种生活电器等场所



J-PICO 1

Product Description:

This is pure DC output lighting home system, with Bluetooth/MP3 music. USB 5V output socket, DC 3.7V output with lamps.

Model No. (型号)	J-Pico1
Solar Panel (太阳能板)	6V 10W poly solar panel (3W~20W optional)
Battery (电池)	3.7V 17.6AH lithium battery (4AH ~17.6AH optional)
Radio (收音机)	Yes, with Bluetooth and MP3 and FM radio
Function (功能)	2 * LED bulbs with cable, mobile charging and Torch



J-PICO 2

Product Description:

This is pure DC output system with FM / Mp3 Function, USB 5V output socket, DC 12V output socket.

Model No. (型号)	J-Pico 2	J-Pico 2 PRO
Solar Panel (太阳能板)	18V/10W~20W~30W	
Battery (电池)	12V7AH/9AH/12AH	
Radio (收音机)	NO	Yes
Function (功能)	DC output/USB/flashlight	DC output/USB/card SD/flashlight



J-PICO 3

Product Description:

This is pure DC output system with FM / Mp3 Function, USB 5V output socket, DC 12V output socket.

Model No. (型号)	J-Pico 3	J-Pico 3 PRO
Solar Panel (太阳能板)	18V/10W~30W	
Battery (电池)	12V 7AH	12V 9AH
Radio (收音机)	Yes	
Function (功能)	Acoustic/DC output/USB/card TF	

◆ SOLAR CAMPING MUSIC LIGHT



J-Mubox 1

Solar Panel : 3W-20W
Battery : 16WH-65WH

Speaker | Lighting | Power Bank

Bluetooth TWS MP3/FM

Built-in Light Show | Separate LED Bulbs



Battery : 7.4V 2200mAh/7.4V 4400mAh/7.4V 6600mAh

◆ SOLAR MUSIC LIGHT



J-Mubox 2

Solar Panel : 3W-12W
Battery : 16WH-50WH

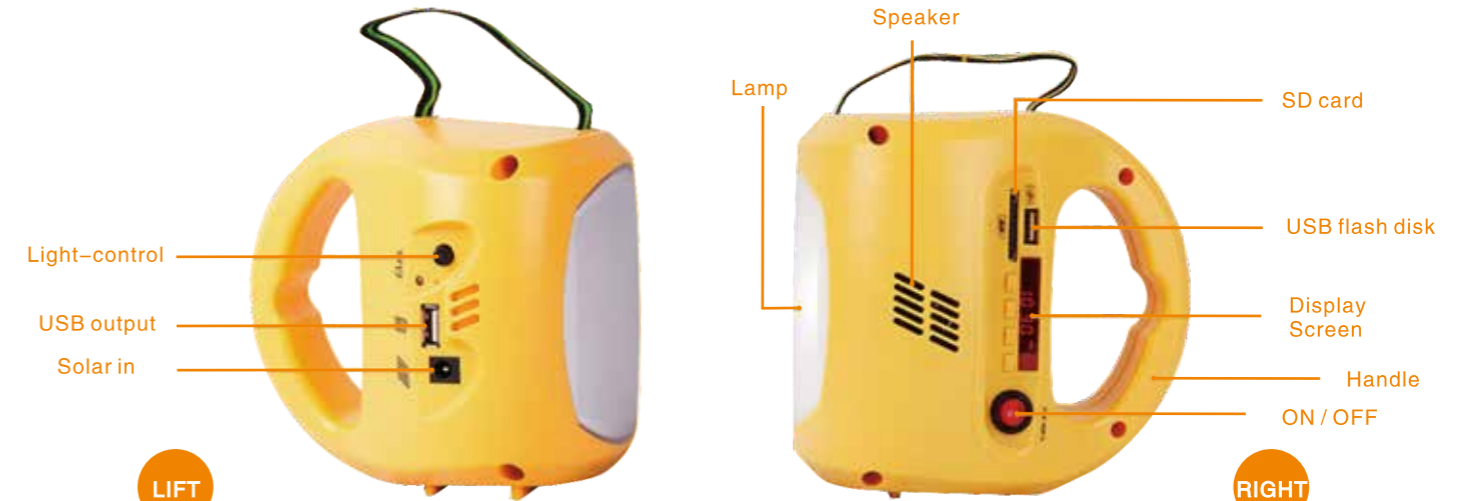
Speaker | Lighting | Power Bank

Bluetooth MP3/FM

Built-in Torch/Reading Light | Separate LED Bulbs



J-F08D



LIFT

RIGHT



Front



Handheld



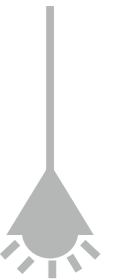
Solar Panel



USB



Adapter



AC 太阳能 家储系列 (一体机)

Solar Home Storage Series (All-In-One Machine)



◆ Widely used in: night markets, mountain areas, night fishing, camping, maintenance, household, various household appliances and other places.
广泛应用于：夜市、山区、夜钓、露营、维修、家用、及各种生活电器等场所



J-Box

Solar panel: 160W (56V 80W folding poly solar panels *2)
Battery: Lifepo4 battery 42V (500WH~750WH)
DC 12V x 3 output ports
USB 5V x 4 output ports
AC 220V x 2 output ports
Pure sine wave inverter 1000W



J-Box Pro

Solar panel: 270W~450W
Battery: Lifepo4 battery 1380WH~2000WH
AC 220V x 2 output ports
LED screen display
Pure sine wave inverter 1000W~1800W



J-Box 500

Solar panel: ≤400W, 18V
Battery: lead-acid battery 12V 65~100AH
DC12V x 6 output ports
USB 5V 1A x6 output ports
AC 220V x2 output ports
pure sine wave inverter 300~1000W

户外
移动电源

Outdoor Portable
Power Supply



随时便携出门，
无惧断电。
*Go out anytime,
without fear of power failure.*

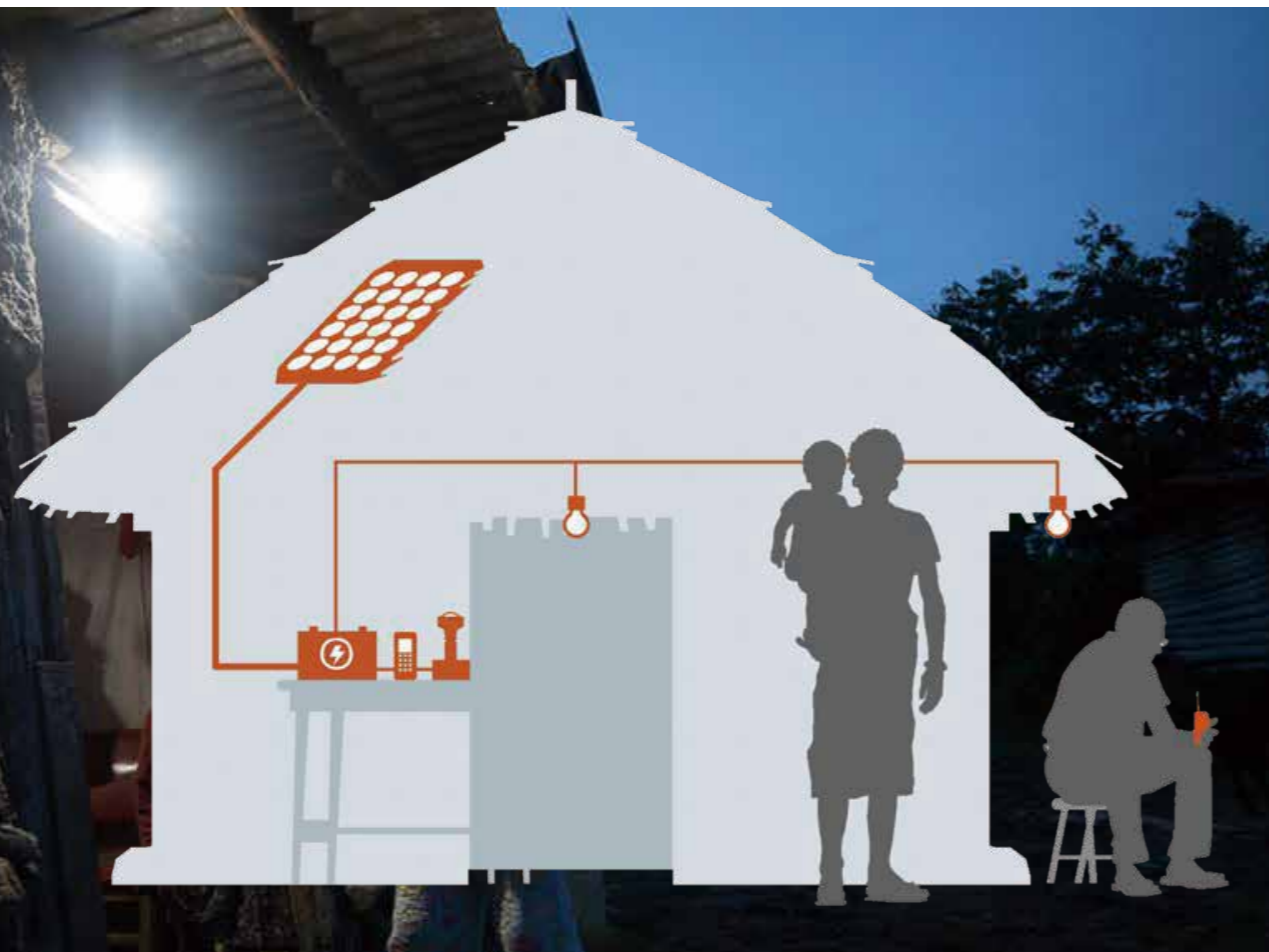


	Model NO. (型号)	JCN-300MB	JCN-600MB	JCN-1200MB	JCN-1800MB
Characteristic 参数	Rated voltage (额定电压)	12.8V	22.2V	22.4V	22.4V
	Nominal Capacity @ 0.2C (标称容量@0.2C)	24Ah	30Ah	50Ah	75Ah
	Electricity (电量)	307Wh	666Wh	1120Wh	1680Wh
	cycle life (循环寿命)	>2000 cycles @ 0.2C, 100% DOD, 70% capacity retention			

Pay As You Go

Pay Go 是 金融 + 技术
Pay Go is finance+technology

Pay Go 将客户付款链接到系统功能。
Pay Go links customer payments to system functions.



Jaygo

Poly Solar Panel 多晶太阳能板	18V 60W~150W
LifePO4 Battery 铁锂电池	12.8V 18AH~48AH
LED Light LED灯	12V 3W LED bulb 5M cable * 4
Inverter 逆变器	150w Modified sine wave inverter
Output 输出	DC 12V output *6 USB 5V output *2 Car charger 12V output * 1



Jaygo MINI

Poly Solar Panel 多晶太阳能板	10.5V 8W~20W
Lithium Battery 三元锂电池	7.4V 5200mah~7800mah
LED Light LED灯	1.2W/6V 4pcs, Light cable 3M 2pcs
Output 输出	6V output *4 / 5V output*1
Function 功能	Bluetooth speaker, torch



Jaygo GSM

Poly Solar Panel 多晶太阳能板	18V 80W~150W
LifePO4 Battery 铁锂电池	12.8V 24AH~45AH
LED Light LED灯	12V 3W LED bulb 5M cable * 4
Paygo mode	GSM IOT
Output 输出	DC 12V output *6 USB 5V output *2

GECKO
光伏储能

**Solar System
For Home
Gecko Series**



让电能服务于生活
Let electricity serve life



Gecko 5Kw

太阳能板 Solar panel	标配1000W 65V standard configuration 1000W 65V
内置电池 Built in battery	48V 100AH
逆变器 Inverter	单相220V 50Hz 5000W Single phase 220V 50Hz 5000W

Gecko 3Kw

太阳能板 Solar panel	标配620W 65V standard configuration 620W 65V
内置电池 Built in battery	48V 60AH
逆变器 Inverter	单相220V 50Hz 3000W Single phase 220V 50Hz 3000W

Gecko 2Kw

太阳能板 Solar panel	标配310W 65V standard configuration 310W 65V
内置电池 Built in battery	48V 24AH
逆变器 Inverter	单相220V 50Hz 1800W Single phase 220V 50Hz 1800W

堆叠 / 机架式
储能系统

Stacked
Cabinet ESS



不担心家里停电没电，大容量应急备用电源
Don't worry about power failure at home, large capacity emergency backup power supply

让电能服务于生活
Let electricity serve life

堆叠 / 机架式
储能系统

Stacked
Cabinet ESS



不担心家里停电没电, **大容量应急备用电源**
Don't worry about power failure at home, large capacity emergency backup power supply

Smart String Energy Storage System

堆叠式储能电池
Stacked energy storage battery



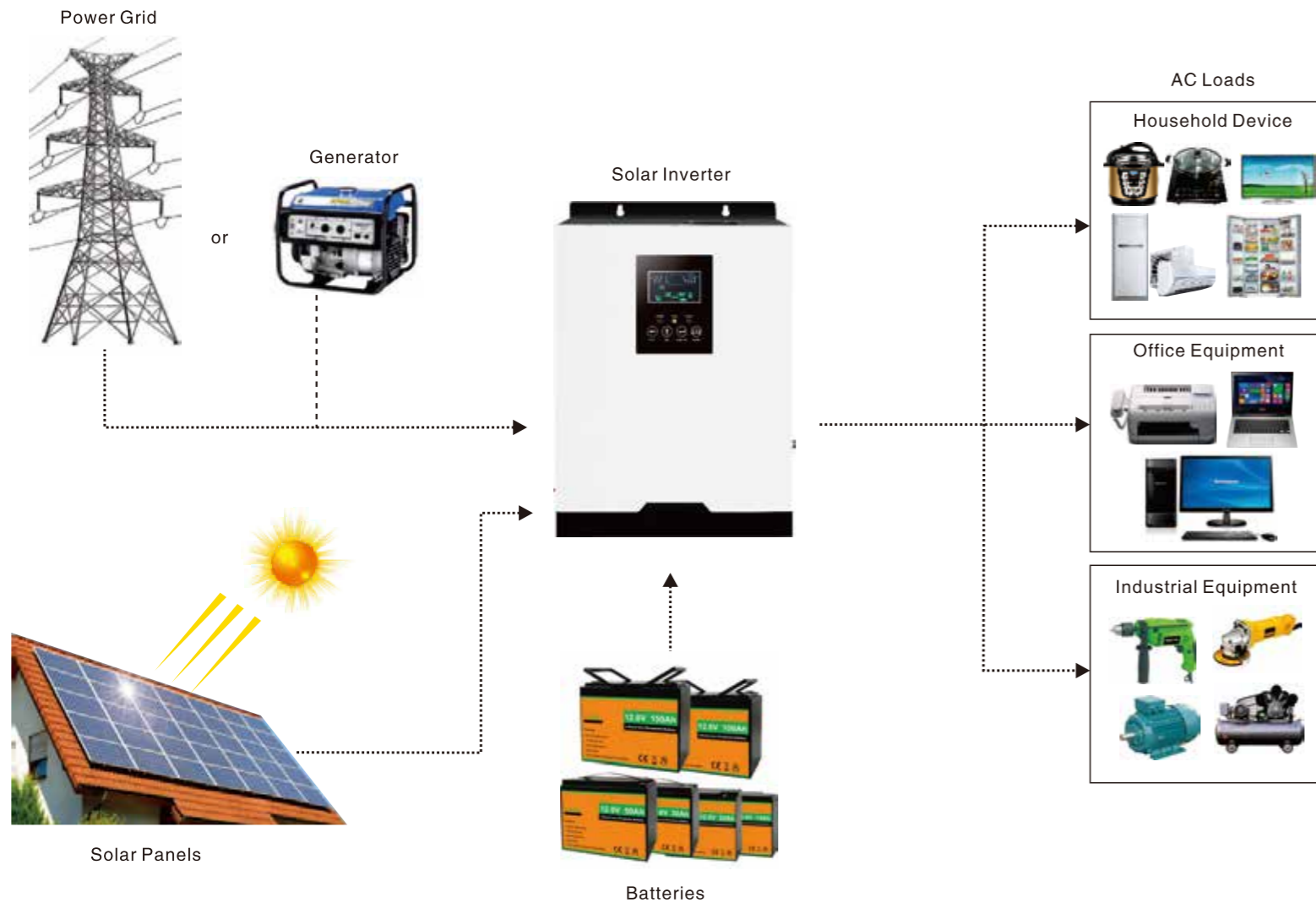


3200W & 5500W HP PRO光伏逆变器

HP Pro Photovoltaic Inverter



技术规格			
型号 HP pro-T	32224	50248	
额定功率	3200W	5000W/5500W	
峰值功率 (20ms)	9600VA	15KVA	
标准电池电压	24VDC	48VDC	
机身尺寸 (L*W*Hmm)	420x290x110	460x304x110	
包装尺寸 (L*W*Hmm)	486x370x198	526x384x198	
净重 (Kg)	8.5	10	
毛重 (Kg)	9.5	11	
安装方式	壁挂式		
光伏	工作模式	MPPT	
	额定光伏输入电压	360VDC	
	MPPT跟踪电压范围	120V-450V	
	最大光伏输入电压Voc (在最低温度条件下)	500V	
	最大光伏输入功率	4000W	6000W
输入	MPPT跟踪路数 (输入路数)	1路	
	直流输入电压范围	21VDC-30VDC	42VDC-60VDC
	额定市电输入电压	220VAC / 230VAC / 240VAC	
	市电输入电压范围	170VAC-280VAC (UPS模式) / 120VAC-280VAC (INV模式)	
输出	市电输入频率范围	45Hz-55Hz (50Hz), 55Hz-65Hz (60Hz)	
	逆变输出效率	94% (峰值)	
	逆变输出电压	220VAC ± 2% / 230VAC ± 2% / 240VAC ± 2% (逆变模式)	
	逆变输出频率	50Hz ± 0.5或60Hz ± 0.5 (逆变模式)	
	逆变输出波形	纯正弦波	
	市电输出效率	>99%	
	市电输出电压范围	跟随输入	
	市电输出频率范围	跟随输入	
	逆变输出波形失真度	≤3% (线性负载)	
	电池模式空载损耗	≤1%额定功率	
电池	市电模式空载损耗	≤0.5%额定功率 (市电充电器不工作)	
	电池类型	阀控式铅酸电池 自定义电池	
	均充电压:13.8V; 浮充电压:13.7V(单节电池电压)	可根据用户要求定制不同类型电池的充放电参数 (可通过操作面板设置不同类型电池的充放电参数)	
	最大市电充电电流	60A	60A
	最大光伏充电电流	100A	100A
保护	最大充电电流(市电+光伏)	100A	100A
	充电方式	三段式 (恒流, 恒压, 浮充)	
	电池欠压报警	电池欠压保护值+0.5V (单节电池电压)	
	电池欠压保护	出厂默认值: 10.5V (单节电池电压)	
	电池过压保护	均充电压值+0.8V (单节电池电压)	
	电池过压保护	出厂默认值: 17V (单节电池电压)	
	电池过压恢复电压	电池过压保护值-1V (单节电池电压)	
	过载功率保护	自动保护 (电池模式), 断路器或保险 (市电模式)	
	逆变输出短路保护	自动保护 (电池模式), 断路器或保险 (市电模式)	
	温度保护	≥90℃关闭整机	
	工作模式	PV优先/电池优先/市电优先 (可设置)	
	转换时间	≤10ms	
面板显示	LCD+LED		
散热方式	智能风扇控制		
通讯功能 (选配)	RS485通讯/手机APP (WiFi)监控或GPRS监控		



Product Parameters			
Model: HP pro-T	32224	50248	
Rated Power	3200W	5000W/5500W	
Peak Power (20ms)	9600VA	15KVA	
Battery Voltage	24VDC	48VDC	
Product Size (L*W*Hmm)	420x290x110	460x304x110	
Package Size (L*W*Hmm)	486x370x198	526x384x198	
N.W (Kg)	8.5	10	
G.W (Kg)	9.5	11	
Installation Method		Wall-Mounted	
P V	Charging Mode	MPPT	
	Rated PV input voltage	360VDC	
	MPPT tracking voltage range	120V-450V	
	Max PV Input Voltage Voc (At the lowest temperature)	500V	
	PV Array Maximum Power	4000W	6000W
Input	MPPT tracking channels (input channels)	1	
	DC Input Voltage Range	21VDC-30VDC	42VDC-60VDC
	Rated AC input voltage	220VAC / 230VAC / 240VAC	
Output	AC Input Voltage Range	170VAC-280VAC (UPS mode) / 120VAC-280VAC (INV mode)	
	AC Input Frequency Range	45Hz-55Hz (50Hz), 55Hz-65Hz (60Hz)	
	Output efficiency(Battery/PV Mode)	94% (Peak value)	
	Output Voltage(Battery/PV Mode)	220VAC ± 2% / 230VAC ± 2% / 240VAC ± 2%	
	Output Frequency(Battery/PV Mode)	50Hz ± 0.5 or 60Hz ± 0.5	
	Output Wave(Battery/PV Mode)	Pure Sine Wave	
	Efficiency(AC Mode)	>99%	
	Output Voltage(AC Mode)	Follow input	
	Output Frequency(AC Mode)	Follow input	
	Output waveform distortion(Battery/PV Mode)	≤ 3%(Linear load)	
Battery	No load loss(Battery Mode)	≤ 1% rated power	
	No load loss(AC Mode)	≤ 0.5% rated power (charger does not work in AC mode)	
	Battery Type	VRLA Battery	Charge Voltage :13.8V; Float Voltage:13.7V(Single battery voltage)
		Customize battery	Charging and discharging parameters of different types of batteries can be customized according to user requirements (charging and discharging parameters of different types of batteries can be set through the operation panel)
	Max AC Charging Current	60A	60A
Max PV Charging Current	100A	100A	
Maximum charging current (mains + PV)	100A	100A	
Protection	Charging method	Three-stage (constant current, constant voltage, floating charge)	
	Battery low voltage alarm	Battery undervoltage protection value+0.5V(Single battery voltage)	
	Battery low voltage protection	Factory default: 10.5V(Single battery voltage)	
	Battery over voltage alarm	Constant charge voltage+0.8V(Single battery voltage)	
	Battery over voltage protection	Factory default: 17V(Single battery voltage)	
	Battery over voltage recovery voltage	Battery overvoltage protection value-1V(Single battery voltage)	
	Overload power protection	Automatic protection (battery mode), circuit breaker or insurance (AC mode)	
	Inverter output short circuit protection	Automatic protection (battery mode), circuit breaker or insurance (AC mode)	
	Temperature protection	>90° C(Shut down output)	
	Working Mode	Mains priority/Solar priority/Battery priority(Can be set)	
	Transfer Time	≤ 10ms	
	Display	LCD+LED	
Thermal method	Cooling fan in intelligent control		
Communication(Optional)	RS485/APP(WIFI) monitoring or GPRS monitoring)		

铅改锂电池

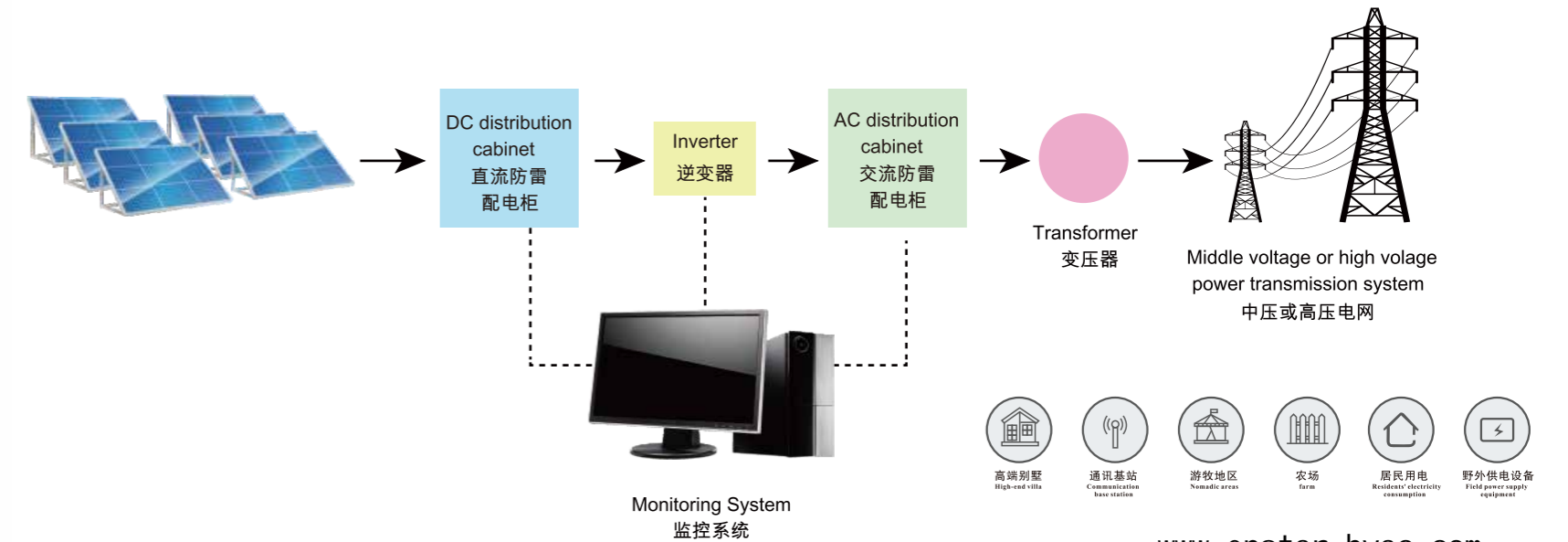
LifePo4 Battery pack



Model	Nominal Voltage	Rated Capacity	Max Discharge Current	Dimension
JCNLF1206	12.8V	6Ah	6A	151*65*95mm
JCNLF1210	12.8V	10Ah	10A	150*95*95mm
JCNLF1220	12.8V	20Ah	20A	181*76*165mm
JCNLF1230	12.8V	30Ah	30A	194*132*170mm
JCNLF1240	12.8V	40Ah	40A	198*166*170mm
JCNLF1250	12.8V	50Ah	50A	198*166*170mm
JCNLF1260	12.8V	60Ah	60A	229*138*208mm
JCNLF1280	12.8V	80Ah	80A	260*168*209mm
JCNLF12100	12.8V	100Ah	100A	329*172*214mm
JCNLF12150	12.8V	150Ah	150A	483*170*240mm
JCNLF12200	12.8V	200Ah	200A	522*240*218mm
JCNLF12300	12.8V	300Ah	200A	520*269*220mm
JCNLF12400	12.8V	400Ah	250A	520*269*220mm
JCNLF2420	25.6V	20Ah	20A	198*166*170mm
JCNLF2440	25.6V	40Ah	40A	260*168*209mm
JCNLF2460	25.6V	60Ah	60A	329*172*214mm
JCNLF24100	25.6V	100Ah	200A	522*240*218mm
JCNLF24200	25.6V	200Ah	6A	520*269*220mm

中小型
工商业储能

Small And Medium
Industrial And
Commercial
Energy Storage



太阳能 路灯

Solar Street Lamp



LM	1800LM / 2500LM
color temp	6500K
Battery	23AH / 45AH
Solar panel	35W / 55W (MONO)
Pole diameter	70-76mm
Install height	4~4.5m (Gap between lights 10-15m) 4.5~5m (Gap between lights 15-15m)
Charge time	5-7H
Materials	High-end aluminum alloy (appearance adopts anodizing process)



Model No. (型号)	50W
Battery (电池)	12.8V / 27AH
Light source (光源)	1W Hight power bright LED beads 4000-4400lm



Model No. (型号)	60W
Battery (电池)	12.8V / 36AH
Light source (光源)	1W Hight power bright LED beads 4000-4400lm



Model No. (型号)	80W
Battery (电池)	12.8V / 48AH
Light source (光源)	1W Hight power bright LED beads 8000-8800lm



太阳能
空调

solar
air conditioner



Solar Air Conditioner							
PRODUCT SPECIFICATION SHEET			RC-ADC09GW-XA-R32	RC-ADC12GW-XA-R32	RC-ADC18GW-XA-R32	RC-ADC24GW-XA-R32	
Power supply source	V/Ph/Hz		220V-1-50Hz/220~240V-1-50Hz	220V-1-50Hz/220~240V-1-50Hz	220V-1-50Hz/220~240V-1-50Hz	220V-1-50Hz/220~240V-1-50Hz	
	DC		DC90-380V MAX.15A	DC90-380V MAX.15A	DC90-380V MAX.15A	DC90-380V MAX.20A	
Rated Capacity	Cooling	W	2500	3500	5000	7000	
	Heating	W	2500	3600	5100	7200	
Rated Power Consumption	Cooling	W	690	1030	1520	2100	
	Heating	W	713	980	1550	2180	
Rated Running Current	Cooling	A	3	4.7	6.9	9.3	
	Heating	A	3.1	4.5	7	9.6	
Max. Input Power		W	1450	1870	2860	3800	
Max. Input Current		A	6.6	8.5	13	17.2	
SEER Cooling		W/W	SEER6.6	SEER6.6	SEER6.6	SEER6.6	
SCOP Heating		W/W	SCOP4.6	SCOP4.6	SCOP4.0	SCOP4.0	
Refrigerant			R32	R32	R32	R32	
Refrigerant Charged		g	900	900	920	1260	
Air Flow Volume		m³/h	650	650	900	1200	
Noise level(INDOOR)		dB(A)	41	42	45	48	
Noise level(OUTDOOR)		dB(A)	50	50	52	56	
Connect pipe	Thickness	mm	Φ6*0.5	Φ6*0.5	Φ6*0.5	Φ6*0.5	
	Gas tube Diameter * Thickness	mm	Φ9.52*0.6	Φ9.52*0.6	Φ12.7*0.7	Φ15.88*0.9	
Compressor Parameter	Compressor Model		KSK103D53UFZ	KSN108D34UFZ	FTz-SM151AXBA	KTM240D43UMT	
	Drive mode	AC/DC	DC	DC	DC	DC	
	Type		Rolling Rotor Type	Rolling Rotor Type	Rolling Rotor Type	Rolling Rotor Type	
	Brand		GMCC	GMCC	LAMDA	GMCC	
	Capacity	W	3120±5%	3080±5%	5780±5%	7740±5%	
	Input	W	805±5%	780±5%	1320±5%	2065±5%	
Rated current(RLA)	A	5.7±5%	5.4±5%	6.0±10%	9.4±10%		
Dimension	Outdoor	Net Dimension	mm	795x290x555	795x290x555	795x290x555	860x304x733
		Packing Dimension	mm	910*400*630	910*400*630	910*400*630	1005*450*820
	Indoor	Net Dimension	mm	895*203*300	895*203*300	1000*240*310	1130*245*320
		Packing Dimension	mm	965*275*370	965*275*370	1075x310*385	1195*310*390
Indoor unit weight (Net)		Kg	12	12	15	17.5	
Outdoor unit weight (Net)		Kg	38	40	43	55	
Loading qty (20/40Q/40HQ)			85/174/205	85/174/205	78/160/189	50/108/127	

